



jordan fishwick

WEST DIDSBURY
Lindale House



Lindale House, West Didsbury, M20 2BG

£220,000

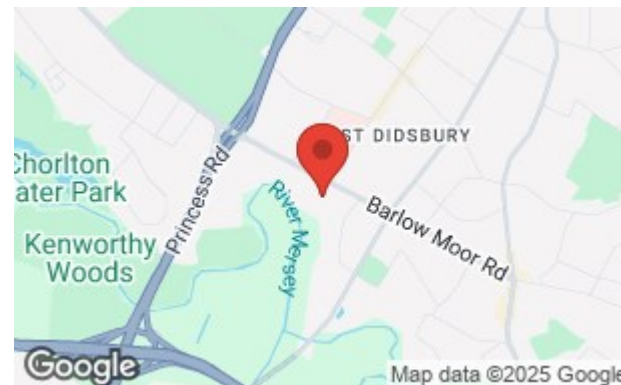


The Property

A WELL PRESENTED APARTMENT, OCCUPYING A FIRST FLOOR POSITION IN A STRIKING CONVERTED VICTORIAN MANSION HOUSE, LOCATED WITHIN STROLLING DISTANCE OF WEST DIDSBURY VILLAGE. A superb and particularly spacious apartment extending to 576 sq ft occupying a first floor position within this impressive Victorian conversion. The property is located within walking distance of fashionable tree lined West Didsbury Village, with a range of bars, shops, restaurants and Metro. The property is well proportioned and presented throughout and will appeal to both first time buyers as well as professionals and buy to let investors. The accommodation consists of a living room with a large curved walk in bay window flooding the room with natural light, a high ceiling and ample space for a dining table, modern fitted kitchen with integrated appliances, double bedroom with fitted wardrobes and ample space for additional free standing furniture. The apartment is served by a white bathroom suite with white suite and over bath shower. Replacement double glazed sash windows and gas central heating complete the impressive specification. Offered for sale with no chain.

Directions

M20 2BG



- One bed period conversion
- Select development of only 5 apartments
- West Didsbury secluded location
- Communal gardens
- Positioned on the first floor
- Re-fitted kitchen
- Replacement double glazed sash windows
- Gas central heating
- No chain

Postcode - M20 2BG

EPC Rating - D

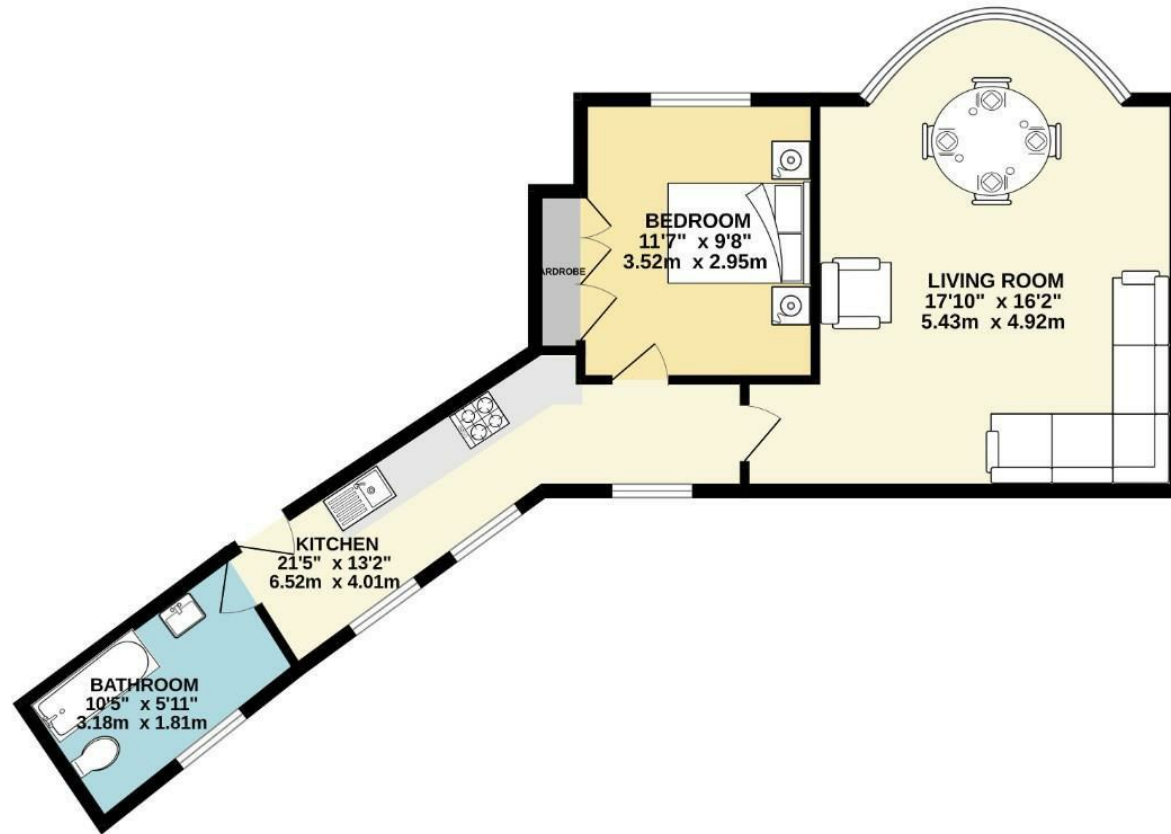
Floor Area - 576.00 sq ft

Local Authority - Manchester City Council

Council Tax - A



GROUND FLOOR
577 sq.ft. (53.6 sq.m.) approx.



TOTAL FLOOR AREA : 577 sq.ft. (53.6 sq.m.) approx.
Measurements are approximate. Not to scale. Illustrative purposes only.
Made with Metropix ©2025



These particulars are believed to be accurate but they are not guaranteed and do not form a contract. Neither Jordan Fishwick nor the vendor or lessor accept any responsibility in respect of these particulars, which are not intended to be statements or representations of fact and any intending purchaser or lessee must satisfy himself by inspection or otherwise as to the correctness of each of the statements contained in these particulars. Any floorplans on this brochure are for illustrative purposes only and are not necessarily to scale.

Offices also at: Wilmslow, Macclesfield, Hale, Sale, Chorlton, Glossop, Manchester & Salford

757-759 Wilmslow Road, Didsbury Village, Manchester

0161 445 4480

didsbury@jordanfishwick.co.uk
www.jordanfishwick.co.uk